

Map Legend *(map on reverse)*

SAFETY NOTE:

Due to hazards from historical mining activities in this park you must stay on the trails identified on this map.

Trailheads

hiking, horseback riding

hiking



Trails

King County-maintained | other

hiking, horseback riding

| hiking only

Facilities and features

picnic area

hitching rail

point of interest

parking area

viewpoint

restrooms

waterfall

park and ride

Publicly owned land

King County: Cougar Mountain Regional Wildland Park

other King County Park land

other park or open space

Other basemap features

incorporated city

unincorporated King County

wetland

arterial street gates

local street water tank

elevation contour (interval = 50 ft.)

Cougar Mountain Regional Wildland Park

Access

Red Town Trailhead

From I-90—Take Exit 13 and drive south on Lakemont Boulevard SE for 3.1 miles. Look for the entrance to the Red Town Trailhead on the left side of the road.

From I-405—Take Exit 10 and follow Coal Creek Parkway SE 2.4 miles to the shopping center. Turn left at the light onto SE 72nd Place and then left again at Newcastle Golf Club Road. Follow that for 1.9 miles. The entrance to the Red Town Trailhead is on the right side of the road just after the big bend.

Sky Country Trailhead

From I-90—Take Exit 13 and drive south on Lakemont Boulevard SE for 2.5 miles. Turn left on SE Cougar Mountain Way and then right on 166th Way SE. Follow 166th for .7 miles to its end. On the right is the Sky Country Trailhead parking lot. This lot includes space for horse trailers.

Harvey Manning Trailhead

From I-90—Take Exit 13 and drive south on Lakemont Boulevard SE for 2.5 miles. Turn left onto SE Cougar Mountain Way. Follow the double yellow line. (The road will first swing left and become 168th Place SE, and then right to become SE 60th Street.) Turn off 60th Street uphill onto SE Cougar Mountain Drive. The road will change to gravel, and at the very end is the Harvey Manning Trailhead, where you will find restrooms, picnic tables and a playground.

Jim Whittaker Wilderness Peak Trailhead

From I-90—Take Exit 15 and drive south on SR-900 (17th Avenue NW and then Renton-Issaquah Road SE) for 3.3 miles. Look for the trailhead sign and an asphalt driveway that goes uphill to the right.

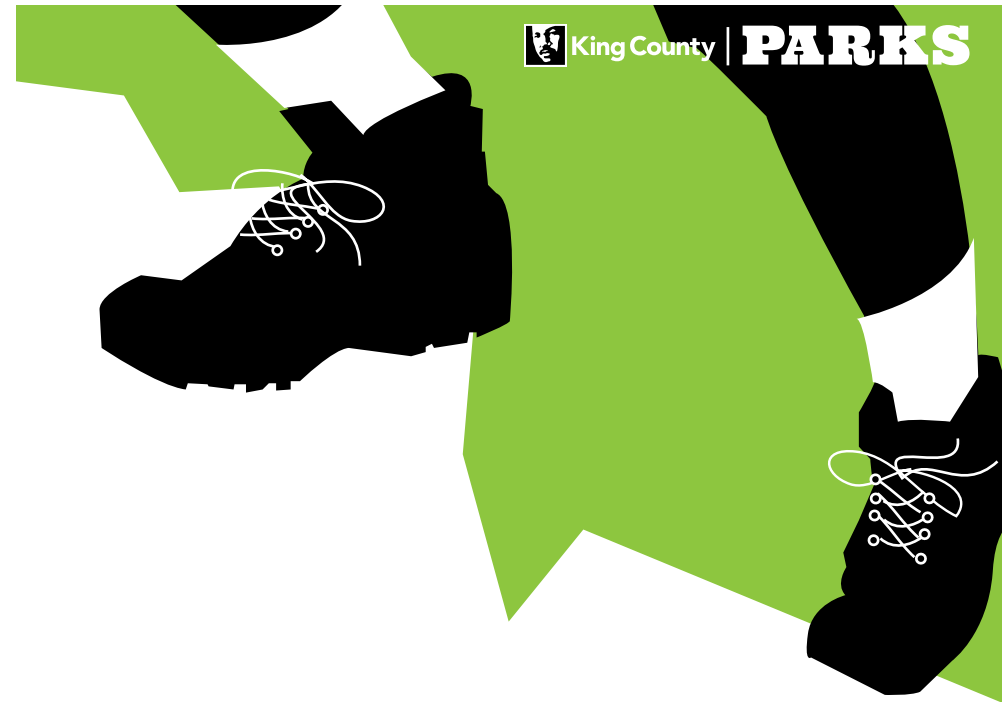
This information is available in alternative formats upon request. Please call 206-477-4527 or 1-800-325-6165.

Washington Relay Service: 1-800-833-6388.

For information about King County Parks, please call 206-477-4527.

Visit King County Parks on the Internet at www.kingcounty.gov/parks.

April 2020



COUGAR MOUNTAIN

Cougar Mountain Regional Wildland Park is the gem of King County's 30,000-acre park system. Just minutes from Eastside cities such as Bellevue, Newcastle and Issaquah, Cougar Mountain Park provides an excellent example of our region's unique historical, cultural and natural heritage. Located in the "Issaquah Alps," Cougar Mountain Park preserves important wildlife habitat while offering ample opportunities for recreation.

"A Great Big Green and Quiet Place"

Harvey Manning
1925 - 2006

Trail Lengths in Miles

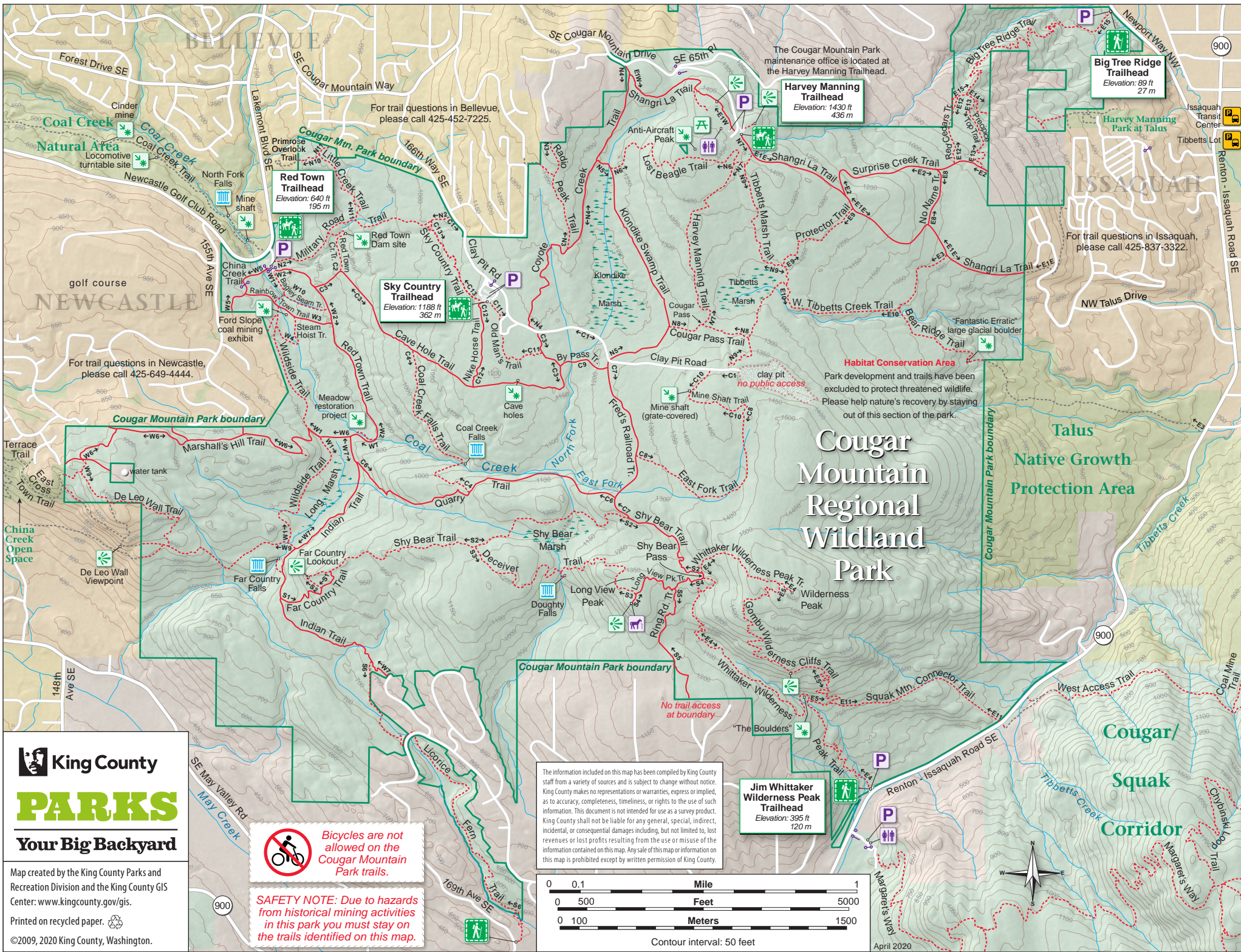
Calculated from current digital data; older trail signs may indicate different values.

N2	Military Road Trail	0.7
N3	Radio Peak Trail	0.4
N4	Coyote Creek Trail	1.1
N5	Klondike Swamp Trail	0.9
N6	Lost Beagle Trail	0.7
N7	Harvey Manning Trail	0.8
N8	Cougar Pass Trail	0.3
N9	Tibbetts Marsh Trail	1.0
N10	Primrose Overlook Trail	0.2
N11	Little Creek Trail	0.4
W1	Wildside Trail	1.0
W2	Red Town Trail	0.8
W3	Rainbow Town Trail	0.3
W4	Steam Hoist Trail	0.2
W5	China Creek Trail	0.3

W6	Marshall's Hill Trail	1.1
W7	Indian Trail	1.3
W9	De Leo Wall Trail	1.1
W10	Bagley Seam Trail	0.2
C1	Clay Pit Road	1.3
C2	Red Town Creek Trail	0.2
C3	Cave Hole Trail	1.2
C4	Coal Creek Falls Trail	0.7
C6	Quarry Trail	1.0
C7	Fred's Railroad Trail	0.6
C8	East Fork Trail	0.7
C9	By Pass Trail	0.2
C10	Mine Shaft Trail	0.3
C11	Old Man's Trail	0.3
C12	Nike Horse Trail	0.3
C13	Sky Country Trail	0.4
E1-W	Shangri La Trail (west)	0.5
E1-E	Shangri La Trail (east)	1.1
E2	Surprise Creek Trail	0.6
E3	Bear Ridge Trail	1.5
E4	Whittaker Wilderness Peak Tr.	1.9
E5	Gombu Wilderness Cliffs Trail	1.3
E8	No Name Trail	0.2
E9	Protector Trail	0.4
E10	West Tibbetts Creek Trail	0.4
E11	Squak Mtn. Connector Trail	0.7
E12	Red Cedars Trail	0.3
E13	Precipice Top Trail	0.3
E14	Military Ridge Trail (in park)	0.1
E15	Big Tree Ridge Trail	0.9
S1	Far Country Trail	0.3
S2	Shy Bear Trail	1.7
S3	Deceiver Trail	0.9
S4	Long View Peak Trail	0.4
S5	Ring Road Trail	0.4
S6	Licorice Fern Trail	1.4




Want the map on your phone? Text **KING COUGAR** to 468311
*Message & Data Rates May Apply



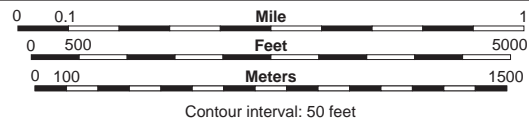
King County
PARKS
 Your Big Backyard

Map created by the King County Parks and Recreation Division and the King County GIS Center: www.kingcounty.gov/gis.
 Printed on recycled paper.
 ©2009, 2020 King County, Washington.

 **Bicycles are not allowed on the Cougar Mountain Park trails.**

SAFETY NOTE: Due to hazards from historical mining activities in this park you must stay on the trails identified on this map.

The information included on this map has been compiled by King County staff from a variety of sources and is subject to change without notice. King County makes no representations or warranties, express or implied, as to accuracy, completeness, timeliness, or rights to the use of such information. This document is not intended for use as a survey product. King County shall not be liable for any general, special, indirect, incidental, or consequential damages including, but not limited to, lost revenues or lost profits resulting from the use or misuse of the information contained on this map. Any sale of this map or information on this map is prohibited except by written permission of King County.



Habitat Conservation Area
 Park development and trails have been excluded to protect threatened wildlife. Please help nature's recovery by staying out of this section of the park.

No trail access at boundary

Jim Whittaker Wilderness Peak Trailhead
 Elevation: 395 ft
 120 m

Harvey Manning Trailhead
 Elevation: 1430 ft
 436 m

Big Tree Ridge Trailhead
 Elevation: 89 ft
 27 m

Red Town Trailhead
 Elevation: 640 ft
 195 m

Sky Country Trailhead
 Elevation: 1188 ft
 362 m

For trail questions in Newcastle, please call 425-649-4444.

For trail questions in Bellevue, please call 425-452-7225.

For trail questions in Issaquah, please call 425-837-3322.